

All Rights Reserved

Materials and specifications are subject to change without notice.  
Featured machines in photos may include additional equipment. See your XCMG dealer for available options.



Hydraulic Excavators  
**XE380E**  
**XE380EN**



**XCMG European Sales and Services GmbH**

Address: Europark Fichtenhain B 4,47807 Krefeld, Deutschland  
Tel: +49 (0) 2151 8206 890  
Fax: +49 (0) 2151 8206 899  
E-Mail: [info@xcmg-ess.de](mailto:info@xcmg-ess.de)

**XUZHOU CONSTRUCTION MACHINERY GROUP IMP. & EXP. CO., LTD**

Address: No.1, Tuolanshan Road, Xuzhou Economic Developing Zone, Jiangsu, China 221004  
Tel: + 86(0) 516 8773 9703  
Fax: + 86(0) 516 8773 9230  
E-Mail: [europa@xcmg.com](mailto:europa@xcmg.com)

[www.xcmg.com](http://www.xcmg.com)

Rated Power: 252 kW  
Operating Weight: 38600-40800 kg  
Bucket Capacity: 1.7-2.1 m<sup>3</sup>





XCMG XE380E/XE380EN builds further on its reputation from the previous series based on the quality, reliability and durability. The enhancements deliver the best fuel efficiency while not compromising on power, reducing emissions and consumption, while increasing productivity.

If you are going to get your work done with a durable brand, you can trust XCMG and look no further than our XE380E/XE380EN.

#### RELIABILITY:

Even under the harshest conditions, XCMG has made its aim to build long-life products. XCMG has already kept a long relationship with the best component suppliers in the world. The Cummins engine, Kawasaki main pump, main valve and swing motor, and high-quality travel motors guarantee you the best performance. Oversized cylinders in combination with long-life reinforced pins, polymer shims and bushings ensure the best performance with unchanged durability.

#### PRODUCTIVITY AND EFFICIENCY:

Strong and unmatched bucket and arm digging forces give XE380E/XE380EN the ability to fulfill the most challenging tasks on your jobsite with excellent productivity and efficiency.

#### SAFETY SOLUTIONS:

The rear and side cameras, large side mirrors, powerful LED lights, anti-slip steps and platforms. Guard rails for safe access to the upper structure. The ROPS (Roll Over Protective Structure) and the OPG (Operator Protective Guard) cabin ensures the operator's safety.

#### VERSATILITY:

Specific boom and arm together with special configurations are available to efficiently carry out any task your business requires.

#### EASY-TO-USE ATTACHMENTS:

Programmable auxiliary lines AUX1 (single and dual way), AUX2 and PTO independent pump control technology are provided to support your hydraulic attachments like grabs, shear, hammer and many more.

#### COMFORTABILITY:

To ensure operator's comfort, we offer a spacious cab with low noise and vibration levels and excellent all-round visibility. Fully adjustable heated air suspension seat and air conditioning with climate control as standard.

#### CONTROLLABILITY:

8 work & 3 power modes, proportional control with a user-friendly 8" TFT LCD color monitor.

#### STRONG POWER:

Exceptionally powerful and fuel efficient with high torque at low revs – the Stage V Cummins L9 engine is equipped with Diesel Particulate Filter (DPF) and associated regeneration system for less emissions.

#### ADVANCED FILTRATION:

Easily accessible and highly efficient filters remove all contamination from your jobsite, protect your investment in the best possible way.

#### SIMPLE AND EASY MAINTENANCE:

Easy access to all compartments. Maintenance data & signs are directly available from the monitor.

#### UNDERCARRIAGE DURABILITY:

The CAE designed X-shape undercarriage realizes even weight distribution, increases the stability and durability, and prevents the damage from rocks and debris.

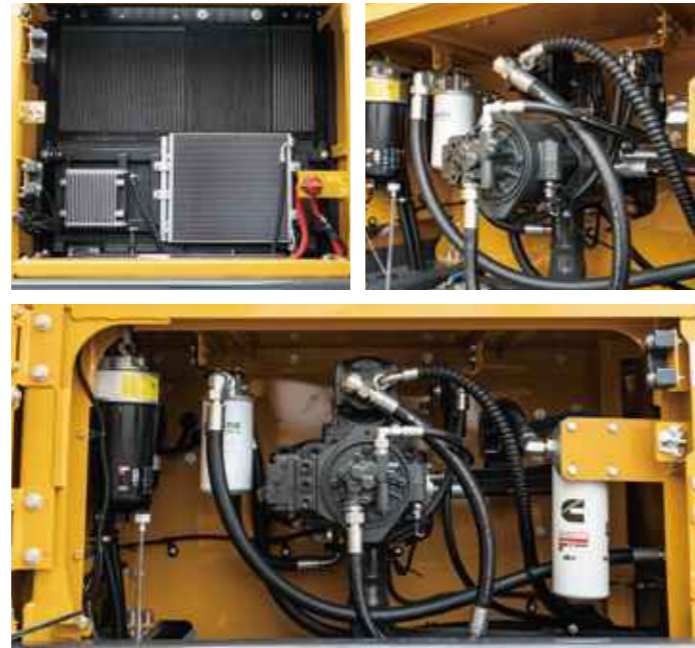




# Excellent Performance and Fuel Economy

## Power without compromise

The XE380E/XE380EN makes your work efficient and comfortable. The optimized Kawasaki-KPM hydraulic system ensures that all the engine power is used in the best possible way by delivering accurate maximum flow in a smooth way. All the power reliably increases the digging force, lifting capacities and the traction force. Higher fuel efficiency means that your usage costs are low and reduces the environmental impacts.



### POWER MATCH TECHNOLOGY

The XE380E/XE380EN is equipped with a Cummins L9 engine. Famous for its excellent fuel efficiency, reliability and long service intervals, it combines exceptional power output and high torque at low revs. Selective Catalytic Reduction (SCR) technology in combination with a Diesel Particulate Filter (DPF) - ensures the compliance with Stage V regulations. If the engine is the heart of the excavator, the XICS (XCMG Intelligent Control System) is its brain - providing a perfectly synchronized communication link between the engine's ECU (Electronic Control Unit) and the hydraulic system. The CAN (Controller Area Network) system enables a constant flow of information between the engine and the hydraulic system, so that power is delivered exactly as needed.

### FUEL ECONOMY TECHNOLOGY

- A choice between 3 power modes and 8 work modes guarantees the optimum performance under all conditions.
- The electronic control of fuel consumption optimizes efficiency.
- The auto-idle function reduces the engine speed when the controls are inactive for a preselected amount of time or when the safety lever is switched off. The engine will immediately return to its original selected speed when the operator touches the controls.
- For optimum cooling, the fan speed is controlled by a viscous clutch that results in lower fan noise with better fuel efficiency.

- Easier hydraulic maintenance:**  
replacement (depending on the hydraulic oil type)
- Replace the hydraulic oil return filter after 500hours
  - Replacement of the hydraulic oil suction filter element after 2000 hours

- Less engine service:**
- 500 hours engine diesel filter replacement
  - 500 hours engine oil and filter replacement
  - The long service intervals guarantee limited downtime.





## First Choice for Comfort

The XE380E/XE380EN is designed to provide you with the best possible working conditions. The spacious cab creates a working environment for the operator to increase the productivity. The pressurized cabin is ISO-certified for your safety, offers a comfortable, heated, and fully adjustable air suspension seat, several storage compartments, and a clear all-round view of your jobsite. The reduced noise and vibration levels with automatic air-conditioning/climate-control will make your workday easier and more comfortable.



### Ergonomic operator environment

XCMG XE380E/XE380EN is powered by the industry-leading engine that saves on fuel and meets the Stage V emission regulations. The variable speed cooling fan with viscous clutch ensures that the fan is only engaged when it's needed. It reduces noise, fuel consumption, wear and tear on the engine when compared to the classic fixed fan cooling. There is also a big advantage for the operator to communicate on jobsite.

### Advanced control technology

The ergonomic, advanced and simple-to-operate - Kawasaki proportional joysticks deliver ultra-precise and smooth control over all movements. The orientation of the joystick's rollers and buttons are adjustable.

### Air conditioning with automatic climate control

A choice from 6 different working modes to regulate the airflow and adjust the system's air temperature and fan speed to maintain the optimal desired temperature. A recirculation function is also available.

### AM-FM radio and DAB Bluetooth radio

The AM-FM radio is standard, the DAB Bluetooth radio is optional, and both are equipped with Bluetooth function.

### Storage space

The new cab has sufficient storage compartments-including a storage box, a document bag and a cup holder.

### Cab suspension

Even at the roughest applications where you are working, the cab's improved new suspension system dampens and smooths out unwanted feedback from your jobsite.

### Quick coupler control

A standard quick coupler hydraulic system with pipelines lets you exchange your attachment easily from the operator's seat. It applies to all common systems.

- 1 Operator's station
- 2 Ergonomic travel pedals
- 3 Heated air suspension seat
- 4 Power outlet
- 5 Throttle dial
- 6 All around AC and heating
- 7 (Bluetooth) AM/FM radio
- 8 Proportional hydraulic joystick
- 9 High quality speaker
- 10 Hammer control pedal
- 11 Engine stop switch
- 12 LCD color monitor
- 13 Safety lever
- 14 Cup holder



## Machine interfaces

All machine interfaces – including joysticks, buttons, the control panel, and the larger LCD monitor – are ergonomically designed for optimum control and efficiency, resulting in increased productivity and workplace well-being. The switches have been simplified and climate control is now integrated into the control panel for easy adjustments.

- The new multi-function 8" TFT LCD monitor displays a comprehensive range of useful technical information, allowing you to check the machine's status and settings at a glance.
- High sensitive & low-damping joysticks and convenient controls enable you to work smoothly and safely with minimum effort.
- The newly adjustable proportional auxiliary functions and PTO independent pump control technology support the precise and smooth control of your attachments.

### Intelligent monitor with touch screen

The upgraded 8" TFT monitor features a day and night display with full user access to the machine settings and maintenance data. Any abnormality is clearly displayed on the screen, allowing you to work safely and be confident with an accurate overview of all conditions.

All-important data can be directly monitored from the main screen.



- |                         |                                 |
|-------------------------|---------------------------------|
| 1. Bluetooth            | 2. Energy-saving mode indicator |
| 3. Travel speed (H/L)   | 4. Automatic idle               |
| 5. Power boost          | 6. Work mode                    |
| 7. Mode and gear        | 8. Warning icon                 |
| 9. Camera               | 10. Time and date               |
| 11. AD blue level       | 12. Mute button                 |
| 13. Main interface set  | 14. Menu                        |
| 15. Coolant temperature | 16. Fuel level gauge            |
| 17. Camera channel      | 18. Fault description           |
| 19. Hour meter          | 20. Hour meter                  |

### Dynamic power management

- Activating the power boost control system increases the digging force by 8.8%.
- Auto-idling starts 4 seconds after all controls are returned to the neutral position

### 8 Work modes & 3 power modes

Deliver the needed power according to your specific application while minimizing the fuel consumption: Multiple attachment modes are available, and the attachment configuration is more flexible. Various modes, one-button switching, easy to operate. Visual adjustment of pressure and flow parameters, more intelligent control.



Air cleaner

Air cleaner: The amount of debris in the air sucked into the engine will affect the service life of the air filter and the efficiency of the engine, the air cleaner, as the first stage of an air intake system, can effectively prevent the entry of most heavier-than-air particles.

## Designed for long-term robustness and safety

Based on rigorous stringent tests, XCMG E-series feature durability in extreme conditions. And we continually manufacture the most durable machines to ensure lower costs of ownership. The robust upper frame, undercarriage structure and the front attachments show the real value in tough working environments and promise higher productivity.



E-mail: Europe@xcmg.com

### Reinforced durability of the X-chassis

The X-shaped undercarriage has a higher durability than demanded on the jobsite, as proven through numerous tests, including road tests and virtual simulation.

### Undercarriage durability with easy maintenance

- The chain is composed of sealed, self-lubricating links for long-term performance
- Long life track tensioners and idlers
- Heavy-duty wear resistant cast sprockets
- Durable lubricated track rollers

### Strengthened boom & arm

Finite Element Analysis has been used to calculate the best load distribution throughout the boom structure. To better protect the base of the arm, reinforced bars have been added, and the arm center and end structure have been strengthened.

### Hi-grade (high-pressure) hoses

The E-series use high-pressure hoses with improved heat and pressure resistance, greatly increasing the durability of the machine.

### Reinforced pins, bushings and polymer shims

The new series has improved the lubricity of the connecting parts between the machine and attachments. Gaps between the machine and the attachment are minimized by wear-resistant long-life pins, bushings, and polymer shims, ensuring the highest performance with invariable durability.

## Excellent serviceability

Our machines are designed for simple routine maintenance, while skilled XCMG technicians are available to provide extra support if needed. To get the most out of your machine, choose the package you need from a broad range of service agreements. Uptime, productivity and residual value are all maximized, making the XE380E/XE380EN an economical and rewarding choice.



### Simple and easy maintenance

- Large guard rails are installed along with anti-slip steps and plates, for safer and easier access to the upper structure.
- The cab air conditioner filter is lockable and located on the side of the cab for easy access.
- The battery cut-off switch is equipped as a jobsite-required safety measure, which can easily disconnect the battery.
- Shut-off valves on the pre-filter pipeline and the fuel tank drain pipeline make the service easier and prevent the pollution from leakage.
- The engine parts can be reached easily via the top and side panels.
- For extra accessibility and maintenance convenience, all filters (engine oil filter, fuel pre-filter, fuel filter and hydraulic pilot filter) are located in the pump compartment.
- The adoption of new Donaldson Power Core R air filters, greatly extends the service life of filter element, reduces the maintenance frequency and the usage costs.

### Pre-start monitoring system

The XE380E/XE380EN has a pre-start monitoring system that shows you the coolant temperature, hydraulic oil temperature, engine oil pressure and fuel level. It also shows the fluid and filter replacement cycle to keep the machine in top working condition.

### Proactive maintenance solutions

- The extended warranty: covering parts, man-hour, and mileage.
- Routine maintenance: your dealer will support you with routine service at regular intervals.
- Genuine parts: manufactured and tested to ensure a long service life of your machine.

### SCR tank and easy diesel filling

The ECU (Engine Control Unit) monitors the AdBlue® system through sensors and warns the operator of potential system malfunctions.

The fuel filler pump, an on-board pump system, lets you fill your fuel tank quickly from an external source (like a fuel drum) – the system stops automatically when the fuel tank is full, or the fuel source is empty.

### Grease centralized lubrication points

Make the maintenance easier.

## ■ Engine

Designed to deliver superior performance and fuel efficiency, the Cummins Stage V diesel engine fully meets the emissions regulations. To optimize machine performance, the engine uses high-pressure fuel injectors, air to air inter-cooler, and electronic engine controls. It's 4-cycle water-cooled, turbocharged, and adopts the technology of Selective Catalytic Reduction (SCR) without a Diesel Particulate Filter (DPF).

XE380E/XE380EN	
Model	Cummins L9
No. of cylinders	6
Rated power at 1800 rpm	-
(SAE J1995)	252 kW (338 hp) at 1800 rpm
(SAE J1349)	-
(ISO 9249)	228 kW (306 hp) at 1800 rpm
Max. torque at 1400 rpm	1526 Nm(1126 lb-ft)
Idle (low - high)	700 - 1200 rpm
Piston displacement	8.9 L (543in <sup>3</sup> )
Bore × stroke	114mm (4.49in) × 145mm (5.69in)
Starter	24 V / 7.8 kW
Batteries - Alternator	2 × 12 V, 150 Ah - 24 V, 70 A
Air Filter	The latest Donaldson PSD air filter and pre-filtered dust separator

## ■ Undercarriage

The extremely robust overall structure - made of high-quality, durable materials, with all welded structures designed to limit stresses.

- Lifetime lubricated track rollers, idlers and sprockets with floating seats.
- Track shoes made of induction-hardened alloy with triple grouser.
- Heat-treated connecting pins.
- Hydraulic track adjuster with shock-absorbing tension mechanism.

### • Number of rollers and track shoes per sidev

	XE380E	XE380EN
Carrier rollers (standard shoes)	2	2
Track rollers	9	9
Number of links & shoes per side	49	49
Link pitch	216	216
Overall track length	5067	5067

## ■ Weight

	Shoe Width (mm)	Operating Weight (kg)	Ground Pressure (kgf/cm <sup>2</sup> )
Triple grouser	600 (Std.)	38700	0.72
	700	39000	0.62
	800	39600	0.55
Double grouser	600	39000	0.62

## ■ Hydraulic system

The XICS (XCMG Intelligent Control System) is the brain of the excavator - minimizing fuel consumption and enabling the efficiency of the hydraulic system to be optimized for all working conditions. To harmonize the operation of the engine and the hydraulics, the XICS is connected to the engine's electronic control unit (ECU) via a data transfer link.

- The hydraulic system enables independent and combined operations - 2-speed travel offers either increased torque or high travel speed.
- Cross-sensing pump system and auto-deceleration system improves fuel efficiency.
- 8 work modes, 3 power modes - flow and pressure control of auxiliary hydraulic circuits from the control panel.
- The computer controls the pump flow.

### • Pump flow & system pressure

XE380E/XE380EN	
Main Pumps, type:	2 × variable displacement tandem axial piston pumps
Maximum flow at 1800 rpm	2 × 324 l/min
Pilot pump, type:	Gear pump
Maximum Pilot Flow at 1800 rpm	27 l/min
Relief valve settings:	-
Pressure up	350/380 kg/cm <sup>2</sup>
Travel	350 kg/cm <sup>2</sup>
Swing	270 kg/cm <sup>2</sup>
Pilot	40 kg/cm <sup>2</sup>

## ■ Cab

Optimal climate control is provided by the integrated air-conditioning and heating system. An automatically- controlled fan supplies the pressurized and filtered cab air, which is distributed throughout the cab from multiple vents. The fully adjustable and heated air suspension seat includes a seat belt. The operator can adjust the ergonomic seat and joystick console separately according to his preferences.

### • Noise emission

XE380E/XE380EN	
A-weighted emission sound pressure level at the operator's position, LpAd (ISO 6396)	74 dB(A)
A-weighted sound power level, LwAd (2005/88/EC)	Guaranteed:106 dB(A) Measured:105 dB(A)

## ■ Component weights

Item	Unit	XE380E/XE380EN	Remarks
Upper structure without front attachment	kg	16858	With counterweight
Lower structure assembly	kg	11466	600 mm shoe
Front assembly	kg	6502	Without cylinder
Counterweight	kg	6900	SLR counterweight
Boom	mm/kg	6400/2914	Including bushing
Arm	mm/kg	3200/1935	Including bushing
		2900/1844	
		2670/1802	

Remarks: The mark \* is lengthened and widened unercarrige

## ■ Swing mechanism

The swing mechanism uses an axial piston motor, driving a 2-stage planetary reduction gear for maximum torque bathed in oil.

- Swing bearing: single-row, shear type ball bearing with induction hardened internal gear.
- Internal gear and pinion immersed in lubricant.

### • Swing speed & Torque

XE380E/XE380EN	
Maximum swing speed	9.9 rpm
Maximum swing torque	105.5 kN-m

## ■ Drive

An independent, high-torque axial piston motor through a planetary reduction gearbox drives each track. Two levers with foot pedals guarantee smooth travel with counter-rotation on demand.

The track frame protects the travel motors brake and planetary gears. The multi-disc track brakes are spring-applied and hydraulic released.

### • Speed & Traction

XE380E/XE380EN	
Travel speed (low - high)	3.2-5.4 km/h
Maximum traction	30 ton
Maximum gradeability	35° / 70%

## ■ Fluid capacities

XE380E/XE380EN	
Fuel tank	540 L
Cooling system (radiator)	34 L
Urea (def) tank	65 L
Hydraulic oil tank	330 L
Engine oil	30 L
Swing drive	12.5 L
Travel device	2×10 L

## ■ Hydraulic cylinders

High-strength steel piston rods and cylinder bodies.

A shock-absorbing(cushion) mechanism fitted in all cylinders for shock-free operation and extended piston life.

Cylinders	Quantity	Bore × rod × stroke (mm)
Boom	2	150 × 105 × 1560
Arm	1	170 × 115 × 1720
Bucket	1	150 × 105 × 1250

## ■ Buckets

Bucket Type	Capacity (m <sup>3</sup> ) SAE	Width (mm)	Weight (kg)	Boom 6.4m		
				Arm 3.2m	Arm 2.9 m	Arm 2.67 m
				Shoe 600 mm	Shoe 600 mm	Shoe 600 mm
GP	2.1	1792	1888	×	C	B
HD	2.3	1941	1984	×	×	C
	1.9	1701	1817	C	B	A
SD	1.7	1455	1744	A	A	A
	1.8	1574	1828	A	A	A

### GP: General purpose; HD: Heavy duty; SD: Severe duty

A: Suitable for materials with a density less than or equal to 2100 kg/m<sup>3</sup>;

B: Suitable for materials with a density less than or equal to 1800 kg/m<sup>3</sup>;

C: Suitable for materials with a density less than or equal to 1500 kg/m<sup>3</sup>;

Based on ISO 10567 and SAE J296, arm length without the quick coupler. For reference only.

■ Model: XE380E Standard undercarriage width: 3190mm · 6.4m Boom · 3.2m Arm · 600mm Shoe · W/o bucket · Unit (kg)

B \ A	3.0 m		4.5 m		6.0 m		7.5 m		9.0 m		At Max.Reach			
	kg	m	kg	m	kg	m	kg	m	kg	m	kg	m		
9.0 m	kg										*8700	*8700	6.5 m	
7.5 m	kg							*8660	7680			*7960	7170	7.8 m
6.0 m	kg							*8780	7620			*7680	6040	8.7 m
4.5 m	kg			*13170	*13170	*10680	10220	*9450	7400	*8880	5620	*7680	5430	9.2 m
3.0 m	kg			*16810	14350	*12420	9680	*10350	7130	9060	5510	*7900	5120	9.5 m
1.5 m	kg			*19440	13490	*13940	9210	*11210	6870	8920	5380	8300	5020	9.5 m
0.0 m	kg			*20380	13140	*14860	8920	11400	6690	8830	5300	8530	5130	9.2 m
-1.5 m	kg	*14670	*14670	*20070	13080	*15010	8810	11310	6610			9180	5490	8.7 m
-3.0 m	kg	*23710	*23710	*18700	13210	*14240	8860	11040	6680			*10120	6260	7.9 m
-4.5 m	kg	*21260	*21260	*15870	13540	*11960	9100					*10150	7970	6.7 m

■ Model: XE380EN Narrow undercarriage width: 2990mm · 6.4m Boom · 3.2m Arm · 600mm Shoe · W/o bucket · Unit (kg)

B \ A	3.0 m		4.5 m		6.0 m		7.5 m		9.0 m		At Max.Reach			
	kg	m	kg	m	kg	m	kg	m	kg	m	kg	m		
9.0 m	kg										*8700	*8700	6.5 m	
7.5 m	kg							*8660	7670			*7960	7150	7.8 m
6.0 m	kg							*8780	7600			*7680	6030	8.7 m
4.5 m	kg			*13170	*13170	*10680	10200	*9450	7390	*8880	5610	*7680	5420	9.2 m
3.0 m	kg			*16810	14320	*12420	9660	*10350	7110	9040	5500	*7900	5110	9.5 m
1.5 m	kg			*19440	13460	*13940	9190	*11210	6860	8900	5370	8280	5010	9.5 m
0.0 m	kg			*20380	13110	*14860	8900	11370	6670	8810	5280	8500	5110	9.2 m
-1.5 m	kg	*14670	*14670	*20070	13050	*15010	8790	11280	6600			9160	5470	8.7 m
-3.0 m	kg	*23710	*23710	*18700	13180	*14240	8840	*11040	6660			*10120	6250	7.9 m
-4.5 m	kg	*21260	*21260	*15870	13510	*11960	9080					*10150	7960	6.7 m

■ Model: XE380E Standard undercarriage width: 3190mm · 6.4m Boom · 2.9m Arm · 600mm Shoe · W/o bucket · Unit (kg)

B \ A	3.0 m		4.5 m		6.0 m		7.5 m		9.0 m		At Max.Reach			
	kg	m	kg	m	kg	m	kg	m	kg	m	kg	m		
9.0 m	kg										*9580	*9580	6.1 m	
7.5 m	kg										*9190	7600	7.5 m	
6.0 m	kg					*9700	*9700	*9140	7540			*8830	6320	8.4 m
4.5 m	kg			*13920	*13920	*11100	10100	*9750	7330			*8820	5650	8.9 m
3.0 m	kg			*17510	14100	*12780	9570	*10600	7070	9010	5470	8750	5310	9.2 m
1.5 m	kg			*19530	13340	*14200	9130	*11390	6830	8890	5360	8630	5210	9.2 m
0.0 m	kg			*20410	13070	*14970	8880	11360	6670			8880	5330	9.0 m
-1.5 m	kg	*14790	*14790	*19840	13070	*14950	8800	11300	6620			9630	5740	8.4 m
-3.0 m	kg	*24480	*24480	*18220	13240	*13960	8880	*10630	6730			*10380	6630	7.6 m
-4.5 m	kg	*19700	*19700	*15010	13610	*11120	9190					*10250	8690	6.3 m

■ Model: XE380EN Narrow undercarriage width: 2990mm · 6.4m Boom · 2.9m Arm · 600mm Shoe · W/o bucket · Unit (kg)

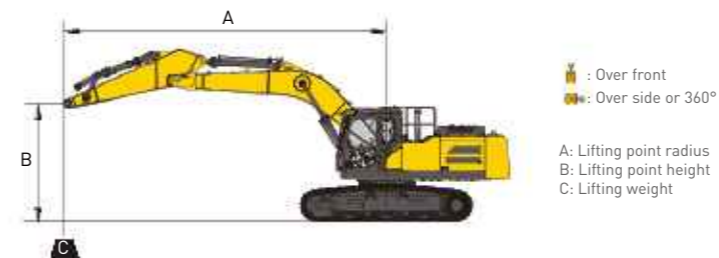
B \ A	3.0 m		4.5 m		6.0 m		7.5 m		9.0 m		At Max.Reach			
	kg	m	kg	m	kg	m	kg	m	kg	m	kg	m		
9.0 m	kg										*9580	*9580	6.1 m	
7.5 m	kg										*9190	7060	7.5 m	
6.0 m	kg					*9700	*9700	*9140	7000			*8830	5870	8.4 m
4.5 m	kg			*13920	*13920	*11100	9340	*9750	6800			*8820	5240	8.9 m
3.0 m	kg			*17510	12880	*12780	8820	*10600	6540	9010	5060	8750	4920	9.2 m
1.5 m	kg			*19530	12140	*14200	8400	*11390	6310	8890	4960	8630	4820	9.2 m
0.0 m	kg			*20410	11880	*14970	8140	11360	6150			8880	4930	9.0 m
-1.5 m	kg	*14790	*14790	*19840	11880	*14950	8070	11300	6100			9630	5300	8.4 m
-3.0 m	kg	*24480	22820	*18220	12040	*13960	8150	*10630	6210			*10380	6120	7.6 m
-4.5 m	kg	*19700	*19700	*15010	12410	*11120	8460					*10250	8000	6.3 m

■ Model: XE380E Standard undercarriage width: 3190mm · 6.4m Boom · 2.67m Arm · 600mm Shoe · W/o bucket · Unit (kg)

B \ A	3.0 m		4.5 m		6.0 m		7.5 m		At Max.Reach					
	kg	m	kg	m	kg	m	kg	m	kg	m				
7.5 m	kg													
6.0 m	kg													
4.5 m	kg													
3.0 m	kg													
1.5 m	kg													
0.0 m	kg													
-1.5 m	kg	*16450	*16450	*21500	13160	15770	8850	11370	7520	10250	6090			
-3.0 m	kg	*25720	*25720	*19540	13360	*15040	8970							
-4.5 m	kg	*20290	*20290	*15680	13770									

■ Model: XE380EN Narrow undercarriage width: 2990mm · 6.4m Boom · 2.67m Arm · 600mm Shoe · W/o bucket · Unit (kg)

B \ A	3.0 m		4.5 m		6.0 m		7.5 m		At Max.Reach					
	kg	m	kg	m	kg	m	kg	m	kg	m				
7.5 m	kg													
6.0 m	kg													
4.5 m	kg													
3.0 m	kg													
1.5 m	kg													
0.0 m	kg													
-1.5 m	kg	*16450	*16450	*21500	11970	15770	8120	11370	6150	10250	5630			
-3.0 m	kg	*25720	23050	*19540	12160	*15040	8230							
-4.5 m	kg	*20290	*20290	*15680	12560									



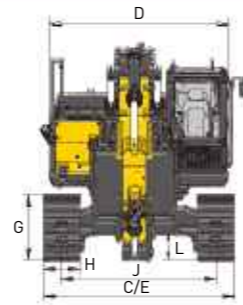
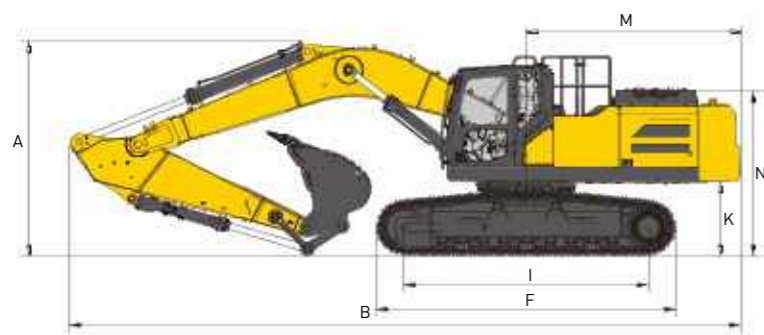
1. The lifting capacity is based on the ISO10567 standard.
2. \* = The maximum lifting capacity is limited by the hydraulic capacity of the machine.
3. The lifting capacity does not exceed 87% of the hydraulic capacity or 75% of the tipping load with the machine on level and firm ground.
4. The operator should be familiar with the machine's operation and maintenance manual. Local regulations concerning the safe operation of machinery must be followed at all times.
5. The lift diagrams only covers machines that are originally built by XCMG; without lifting chains and any other lifting equipment.
6. When the excavator is used to lift or handle materials, it must comply with local regulations.



# Dimensions & Working Range



# Standard and optional equipment



### Dimensions

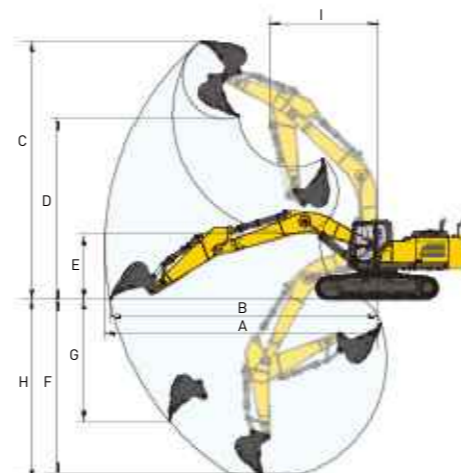
XE380E/XE380EN			
Boom Length - mm	6400	6400	6400
Arm Length - mm	3200	2900	2670
A Overall height - mm	3805	3815	3812
B Overall length - mm	11336	11360	11415
C Overall width - mm	3190/2990	3190/2990	3190/2990
D Upper structure width - mm	2970	2970	2970
E Chassis width (extended/retracted) - mm	3190/2990	3190/2990	3190/2990
F Track length - mm	5059	5059	5059
G Track height - mm	1096	1096	1096
H Standard track shoe width - mm	600	600	600
I Track wheelbase - mm	4138	4138	4138
J Track gauge (extended/retracted) - mm	2590/2390	2590/2390	2590/2390
K Counterweight ground clearance - mm	1259	1259	1259
L Minimum ground clearance - mm	540	540	540
M Tail Swing Radius - mm	3618	3618	3618
N Hood height - mm	2848	2848	2848

### Working range

XE380E/XE380EN			
Boom length - mm	6400	6400	6400
Arm length - mm	3200	2900	2670
A Maximum reach - mm	11266	10987	10661
B Maximum reach at GRP - mm	11061	10777	10445
C Maximum digging height - mm	10617	10523	10116
D Maximum unloading height - mm	7414	7298	6959
E Minimum unloading height - mm	2667	2966	3216
F 8 ft. level floor digging depth - mm	7302	6983	6709
G Maximum vertical digging depth - mm	5050	5014	4559
H Maximum digging depth - mm	7462	7155	6916
I Minimum swing radius - mm	4456	4559	4546

### Digging forces (ISO)

One-piece boom			
Boom length - mm	6400		
Arm length - mm	3200+2900+2670		
Bucket - kN	268	270	270
Arm - kN	190	204	216



### Engine

- AD Blue
- Automatic preheating
- Fuel-water separator with water level indication sensor
- Axial seal air cleaner
- Air prefilter
- 50°C high temperature ambient cooling assembly
- Dust screen for radiator
- Fuel-water quick release device
- Electronically controlled silicone oil clutch
- Fuel filling pump
- Fuel breather valve
- Air pressure difference indicator
- Auto-idle function

### Hydraulic System

- Auxiliary hydraulic valve
- One & two way hydraulic line for hammer & thumb plier
- Two way hydraulic line for shell bucket rotating
- Hydraulic quick coupler lines
- Hydraulic oil ISO VG 46
- Hydraulic oil ISO VG 32
- Hydraulic oil ISO VG 68
- Right electric proportional joystick
- Left electric proportional joystick
- Gauge pressure monitoring
- AUX1 and AUX2 flow set on monitor
- AUX1 pressure set on monitor
- AUX2 pressure set on monitor
- PTO pump

### Cab & Interior

- Pressurized cab
- Air suspension seat with heater
- Control box
- Rain visor
- Front windshield divided 70/30 ratio
- Toughened windows
- Sliding fold-in front window
- Bi-directional air outlet air conditioner with defroster [automatic type] [pressurization function]
- Color LCD monitor, displaying warning information, filter / liquid replacement information and working hours, with touch screen
- Travel control pedal with detachable manual control lever
- Double stereo speaker
- Cup holder
- Coat hook
- Floor mat
- Retractable seat belt [51 mm [2"] wide]
- High and low travel speed switch
- One-key boost mode
- Reserve switch for working aids
- Sunlight protection roof
- Top sunroof
- Windshield wiper with intermittent feature
- File packet
- Rear window emergency exit
- Hammer for emergency escape

### Undercarriage

- Width of standard chassis-2990 mm [XE380EN]
- Width of standard chassis-3190 mm [XE380E]
- Widened undercarriage [3340 mm]
- 2 x 3 rail clamps
- 2 x 49 joint track, 2 x 9 track roller
- 2 x 2 Carrier roller
- Bottom frame traction ring
- 600 mm [24"] triple grouser track shoes
- Protective device kit: undercarriage bottom sealing plate, travel motor sealing plate
- 600 mm [24"] double grouser track shoes
- 700 mm [28"] double grouser track shoes [XE380E]
- 800 mm [31"] double grouser track shoes [XE380E]
- 700 mm [28"] triple grouser track shoes [XE380E]
- 800 mm [31"] triple grouser track shoes [XE380E]

### Working device

- Boom 6.4 m
- Arm 3.2 m
- 1.7 m³ Rock bucket
- Arm 2.67 m
- 1.8 m³ Heavy duty bucket
- 2.1 m³ General purpose bucket
- 60 inch width ditching bucket
- Miller hydraulic quick coupler with CE
- XCMG hydraulic quick coupler without CE
- XCMG hydraulic hammer with CE

### Electronic system

- Battery [2 x 850 CCA]
- 70 A Alternator
- 7.8 kW starter motor
- 5 V USB interface
- Emergency stop
- Right-view camera
- Rear-view camera
- 270° image
- AM-FM radio with Bluetooth
- DAB radio with Bluetooth
- Travel buzzer with switch
- Beacon lamp
- 2 LED cab-mounted front lights
- 1 LED cab-mounted rear light
- 2 LED boom-mounted lights
- 12 V power interface
- Ceiling light

### Counterweight

- 6.9 t counterweight

### Lubrication system

- Automatic lubrication system
- All points automatic lubrication system

### Safety

- Anti-collision beam
- Driving door locks and cabin locks
- Alarm horn
- Quick-coupler switch with buzzer
- Isolation plate between engine and oil pump chamber
- Battery disconnection switch
- Overheat alarm
- Safety handrails and pedals
- Anti-skid plate/anti-skid paste
- Hydraulic safety locking lever
- Right and left rear-view mirrors
- Safety valves for boom cylinders
- Safety valves for arm cylinders
- Roll over protective structure [ROPS]
- Operator protective guard [OPG]
- Safety net on the front lower windshield

Standard:   
Optional:

- Some of the standard or optional equipment may not be available for certain markets.
- Pictures may include attachments and optional equipment that are not available in your area.
- Materials and specifications are subject to change without advance notice.
- Please contact your local XCMG dealer for more information on availability or to customize your machine to suit your application requirements.

# Optimum Services, XCMG Guaranteed



XCMG-approved attachments



Genuine parts



Extension of warranty



Financial solutions



Maintenance contract



Telematics

## Professional Integrated Complete Solutions

The XCMG group has built a strong reputation based on the quality, reliability and durability of its construction machinery. What's more, XCMG has gradually established a service network to constantly provide its local integrated and highly efficient complete solutions for all customers.



## Full Range of Services Ready for you

In order to respond to your needs as fast as possible, XCMG experts are on their way to your job site from one of our facilities near you. A Full range of services is available in order to reduce your total cost of ownership and increase your revenue.

### XCMG Global Spare Parts System



Mobile cranes



Excavators



Aerial work platforms



Wheel loaders



Road machinery

